

INVERLOCHY CASTLE

HIGHLANDS, SCOTLAND

ICMI LUXURY COLLECTION



ICMI
— *The Collection*



INVERLOCHY CASTLE

THE GRAND HOTEL OF THE SCOTTISH HIGHLANDS

Inverlochy Castle is reflected in its own loch, and backed by Ben Nevis, Britain's highest mountain. The grandeur of this much-awarded historic hotel, with its fine dining restaurant, only adds to the beauty of its dramatic landscape. Queen Victoria, who used the Castle as an escape from running the British Empire, said she "never saw a lovelier or more romantic spot". Today's guest receives an equally royal welcome in the Great Hall, and spends their days walking, relaxing with a matchless selection of limited-release whiskies, or enjoying the fabulous cuisine. It is also the greatest of all bases from which to explore the Highlands.

- 17 rooms and Gate Lodge
- Fine dining restaurant
- Extensive landscaped gardens
- Full-sized snooker table
- Extensive whisky library
- Private loch
- Fishing on property, on request
- Clay pigeon shooting on property, on request
- Games room
- Stalking, shooting, fishing, pony trekking, skiing, golf & other outdoor pursuits available nearby
- Awarded Best Hotel in Europe by Travel & Leisure magazine, 2006
- Awarded Best Service in Europe by Travel & Leisure magazine, 2007
- Awarded Scottish Hotel Awards Luxury Hotel of the Year 2010, 2011, 2013
- Awarded Conde Nast Johansens Best Destination 2014

✈ Inverness 90 minutes, Glasgow International 2.5 hrs, Edinburgh International 3 hrs
 ✈ helipad
 Transfers available by the Castle's Rolls Royce Phantom



Tel: +44 (0)1397 702177
info@inverlochy.co.uk
inverlochycastlelehotel.com

CROMLIX

PERTHSHIRE, SCOTLAND

ICMI LUXURY COLLECTION



ICMI
— *The Collection*



CROMLIX

ANDY MURRAY'S GOURMET LUXURY COUNTRY HOUSE HOTEL

Less than an hour from Edinburgh and Glasgow International airports, yet in a different world, Cromlix sits in 34 acres of private woodland. It has its own loch with sweeping views towards the Perthshire countryside. A restaurant blending French cuisine and Scottish ingredients, run by the legendary Albert Roux. It also boasts a tennis court in the Wimbledon colours, to celebrate the owner's victory in the men's singles in 2013. A historic house completely transformed by Andy Murray and ICMI and reopened in 2014, Cromlix is a good base for a tour of central Scotland and the Highlands, or for golfers wanting to play at nearby Gleneagles, or for those who just want to chill out and enjoy the peace, the terrace, the Scottish afternoon tea, and the gardens.

10 bedrooms, 5 suites and Gate Lodge

34 acres of woodlands, gardens and private loch

Chez Roux restaurant, overseen by Albert Roux, Britain's OBE, KFO owner of Le Gavroche, the first UK restaurant to be awarded three Michelin-stars

Tennis Court


Whisky tasting room


Snooker room, private dining room and meeting rooms

Private chapel for weddings

Croquet lawn

Easy access to the Highlands, Stirling Castle, Loch Lomond, Edinburgh and Glasgow

 Glasgow International 45 mins, Edinburgh International 45 mins

 helipad

Tel: +44 (0)1786 822125
enquiries@cromlix.com
cromlix.com



CROSSBASKET CASTLE

NEAR GLASGOW

ICMI LUXURY COLLECTION

ICMI
— *The Collection*





CROSSBASKET CASTLE

Crossbasket Castle is the best of both worlds. It's a traditional Scottish luxury hotel nestled in a forest, with a river rushing through its grounds, and décor to suit any Laird of the Manor. It is a perfect wedding and conference venue just 15 minutes drive from the centre of Glasgow, Scotland's largest city, and 35 minutes from Glasgow International Airport.

The Tower of the Castle dates back to the 15th century and its most celebrated owner was the 19th century draper Charles Macintosh, of raincoat fame. It has been brought sympathetically into the heart of the 21st century by its current owners; as well as a textbook historical refurbishment, they have added a brand new ballroom for 250 to the main building.

Opened in May 2016 as a nine-bedroom luxury hotel, Crossbasket Castle also features the 'Albert and Michel Roux Jnr at Crossbasket Castle' restaurant, offering high-end fine dining and the very best of Scottish produce.

Whether it's for an idyllic place to stay during a sojourn in Glasgow, a romantic break, the event of a lifetime or one of the best dining experiences in Scotland, Crossbasket Castle, managed by the award winning ICMI team, is the best of all worlds.

9 bedrooms

Fine dining restaurant

Formal Gardens with extensive seating and strolling areas

Available for exclusive use for weddings, house parties and corporate events

A short drive from Glasgow International Airport



Glasgow International 35mins, Edinburgh International 50 mins,
Queen Street train station 30mins



Tel: +44 (0)1698 829461
info@crossbasketcastle.com
www.crossbasketcastle.com

ISLE OF ERISKA

ARGYLL AND BUTE

ICMI LUXURY COLLECTION



ICMI
— *The Collection*



ISLE OF ERISKA

UNIMAGINABLY BEAUTIFUL HOTEL AND SPA RESORT ON A PRIVATE ISLAND OFF THE WEST COAST OF SCOTLAND

Mountains, islands, lochs, inlets, wilderness: the view from Eriska has it all. This gourmet luxury and spa resort is on its own island, off the west coast of Scotland. You could be at the ends of the earth; yet Eriska is less than two hours by private transfer from Glasgow International Airport. As well as a fine dining restaurant famed for its local ingredients, there is an ESPA spa and 17-metre indoor pool, golf course with driving range, and a variety of accommodation with fabulous views.

Eriska offers a variety of activities by prior arrangement, including clay pigeon shooting, mountain biking, sailing and watersports. Just walking around this beautiful island on the hiking trails is an adventure in itself. Cuisine is a focus at Eriska, which has its own salmon smokery and kitchen garden; the chefs can often be seen roaming the island foraging for local wild ingredients, from seaweed to herbs. Vistas from all the rooms are spectacular.

16 bedrooms, 5 Spa Suites and 2 Garden Cottages
 6 Hilltop Reserves and the 3 bedroom Arnott's House
 Famed fine dining restaurant using local ingredients
 Golf course and driving range
 ESPA spa and 17 metre indoor pool
 Mountain biking, sailing and watersports
 Easy access to the Highlands



Glasgow International Airport 2 hrs



Glasgow Central train station 2.5 hrs



helipad – Location dependent on size

Tel: +44 (0)1631 720371
office@eriska-hotel.co.uk
www.eriska-hotel.co.uk



GREYWALLS

NEAR EDINBURGH, SCOTLAND

ICMI LUXURY COLLECTION



ICMI
— *The Collection*



GREYWALLS

ARCHITECTURAL GEM IN GOLFERS' HEAVEN

A short drive from the historic delights of Edinburgh's Royal Mile, Greywalls sits on the edge of the dramatic Firth of Forth sea inlet and beside the world-renowned Muirfield golf course – and a short journey from several other championship courses. Designed by the celebrated Edwardian architect Sir Edwin Lutyens, Greywalls is one of the most notable pieces of architecture in the country, replete with manicured gardens and a close-up view of Muirfield's fairways. Master chef Albert Roux oversees the Chez Roux restaurant, which is a destination in itself for Edinburgh's cognoscenti. The ambience at Greywalls is of a distinguished, sophisticated but relaxed hotel where golf's elite gather to play, plan, and discuss the day's excitement.

23 bedrooms

Next door to Muirfield golf course (access arranged)

Ten golf courses (including four championship courses) within five miles

Formal gardens with extensive seating and strolling areas, and kitchen garden

Available for exclusive use for weddings, house parties and corporate events

Chez Roux restaurant, overseen by Albert Roux, Britain's OBE, KFO owner of Le Gavroche, the first UK restaurant to be awarded three Michelin-stars

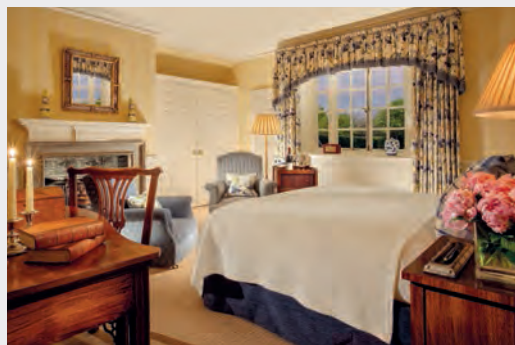
Easy access to beaches, castles and golf courses in the area

A short drive from Edinburgh's historic sights

Sweeping views over the Firth of Forth and Lammermuir Hills

✈️ Edinburgh International 30 mins, Glasgow International 1.5 hrs
 🚁 helipad

Tel: +44 (0) 1620 842144
 enquiries@greywalls.co.uk
 greywalls.co.uk



COLONEL'S HOUSE

NEAR EDINBURGH, SCOTLAND

ICMI LODGES & INNS COLLECTION

ICMI

— *The Collection*





THE COLONEL'S HOUSE

PRIVATE LODGE IN GOLFERS' HEAVEN

The Colonel's House sits in the grounds of Greywalls Hotel and has four bedrooms, sleeping ten, in a private lodge setting. The House is 200 metres from Greywalls itself and can be booked out in its entirety. A short drive from the historic delights of Edinburgh's Royal Mile, Greywalls sits on the edge of the dramatic Firth of Forth sea inlet and beside the world-renowned Muirfield golf course – and a short journey from several other championship courses. Designed by the celebrated Edwardian architect Sir Edwin Lutyens, Greywalls is one of the most notable pieces of architecture in the country, replete with manicured gardens and a close-up view of Muirfield's fairways. Master chef Albert Roux oversees the Chez Roux restaurant, which is a destination in itself for Edinburgh's cognoscenti. The ambience at Greywalls is of a distinguished, sophisticated but relaxed hotel where golf's elite gather to play, plan, and discuss the day's excitement.

Four bedrooms, sleeping 10 in total; available for exclusive use and perfect for golfing parties
Next door to Muirfield golf course (access arranged)

Ten golf courses (including four championship courses) within five miles

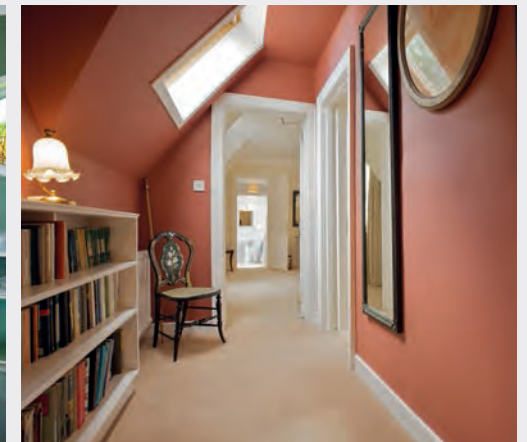
Formal gardens with extensive seating and strolling areas, and kitchen garden

Use of Greywalls facilities, including Chez Roux restaurant, overseen by Albert Roux, Britain's OBE, KFO owner of Le Gavroche, the first UK restaurant to be awarded three Michelin-stars

Easy access to beaches, castles and golf courses in the area

A short drive from Edinburgh's historic sights

Sweeping views over the Firth of Forth and Lammermuir Hills



Tel: +44 (0) 1620 698 000
info@thecolonelshouse.co.uk
thecolonelshouse.co.uk

ROCPOOL RESERVE

INVERNESS, SCOTLAND

ICMI LUXURY COLLECTION



ICMI
— *The Collection*



ROCPOL RESERVE

LUXURY URBAN RETREAT IN THE CAPITAL OF THE HIGHLANDS

Rocpool Reserve is two completely different hotels in one. On the one hand, it is a decadently stylish urban retreat on the edge of Inverness, where you can sip cocktails in the contemporary-chic bar and dine at the Chez Roux restaurant, and relax in your on-balcony hot tub. On the other, it is the perfect touring base, situated in the capital of the Highlands, and equally accessible to the whisky country of Speyside, the dramatic national park around Aviemore, and Loch Ness and its many attractions.

The cossetting metropolitan boutique ambience is a striking contrast to the natural wonders a short drive away, and Rocpool, the city's only five star hotel, is a destination for the traveller who wants both wilderness and contemporary urban creature comforts.

11 bedrooms in four categories: hip, chic, decadent, extra decadent
Flat screen 30" TVs, DVD players, dual cordless phones and super king size beds in every room; iPod docks in some rooms

Chez Roux restaurant, overseen by Albert Roux, Britain's OBE, KFO owner of Le Gavroche, the first UK restaurant to be awarded three Michelin-stars

A short drive from Loch Ness

Exclusive hire for weddings, conferences, entertaining available

Numerous childrens' activities available nearby including go-karting, quad biking, archery and riding

Awarded Luxury Hotel of the Year, Scottish Hotel Awards 2013



Inverness 20 mins, Edinburgh International 3 hrs

Inverness station 10 mins by car (overnight sleeper service from London)

Tel: +44 (0)1463 240089

info@rocpool.com

rocpool.com

THE INCH
LOCH NESS, SCOTLAND
ICMI LODGES & INNS COLLECTION



ICMI
— *The Collection*



THE INCH

COUNTRY INN ON THE CENTRAL SHORES OF LOCH NESS

The Inch is situated just outside Fort Augustus, the touring capital of Loch Ness, Scotland's most famous, and biggest, Loch. It has spectacular views over the heart of the Loch and offers a hearty and friendly welcome to individuals, groups and families. Loch Ness cruises and longer boat trips along the Great Glen depart from Fort Augustus, walking distance from the hotel. Urquhart Castle is a short drive and Ben Nevis, Scotland's highest mountain, is less than a 45 minute drive away.

Located in a fabled spot above Inchnacardoch Bay

A short walk from the centre of Fort Augustus, centre of Loch Ness cruises and activities

Many views with spectacular Loch Ness views

Touring base for Loch Ness and the Great Glen/Caledonian Canal

Restaurant specialising in local produce, and bar/lounge with malt whisky selection



Inverness 45 minutes



Inverness station 45 minutes by car (overnight sleeper service from London)



Tel: +44 (0)1456 450900
happy@inchhotel.com
inchhotel.com

FACTOR'S INN & COTTAGE

SCOTTISH HIGHLANDS
ICMI LODGES & INNS COLLECTION



ICMI
— *The Collection*





FACTOR'S INN AND FACTOR'S COTTAGE

GUEST LODGES IN THE GROUNDS OF INVERLOCHY CASTLE

The Factor's Inn and Factor's Cottage are private, self-contained accommodation within the grounds of Inverlochy Castle, the grandest hotel of the Highlands. The rooms (accommodation is on an individual room-only basis) are comfortable and only a couple of minutes' walk from the hotel.

Inverlochy Castle, whose facilities guests here can use, has many attractions including a fine dining restaurant; Queen Victoria, who used the Castle as an escape from running the British Empire, said she "never saw a lovelier or more romantic spot". You can spend your days walking, relaxing with a matchless selection of limited-release whiskies, or enjoying the fabulous cuisine. This is also a perfect base from which to explore the Highlands.

The Factor's Inn has 4 bedrooms (rented individually)

The Factor's Cottage has 5 bedrooms (rented individually), a shared kitchen and lounge

Facilities in Inverlochy Castle include:

Fine dining restaurant in Inverlochy Castle

Full-sized snooker table

Extensive whisky library

Private loch

Fishing on property, on request

Clay pigeon shooting on property, on request

Games room

Stalking, shooting, fishing, pony trekking, skiing, golf & other outdoor pursuits available nearby

✈ Inverness 90 minutes, Glasgow International 2.5 hrs, Edinburgh International 3 hrs
 ✈ helipad

Tel: +44 (0) 1397 520 750

info@factorsinn.com

factorsinn.com



BLANEFIELD HOUSE

NEAR TURNBERRY, SCOTLAND

ICMI LODGES & INNS COLLECTION



ICMI
—The Collection



BLANEFIELD HOUSE

PRIVATE COUNTRY HOUSE IN GOLFING HAVEN

BlaneField is an exclusive-hire country house in a secluded setting just minutes from Turnberry, one of the world's most celebrated golf courses. It has the feel of an opulent yet comfortable personal home, and is equally relaxed whether booked on a self-catering basis or optionally staffed by Inverlochy Castle's award-winning chefs. A short drive from the metropolitan area around Glasgow and Edinburgh, it is also in the heart of Scotland's green, rolling southwest, a stone's throw from the spectacular coastline. For golfers, Turnberry and other nearby championship courses like Royal Troon are a must, while Turnberry's extensive spa and resort facilities (full access available) will keep non-players in a state of nirvana. Shooting and fishing are also near at hand.

6 rooms, entire house exclusive use only

Self catered or full cuisine service option

Secluded grounds and private woodland

Turnberry, Royal Troon and five other championship golf courses nearby

Pheasant shoots, grouse moors, salmon fishing nearby

Access to yachting marina available

Full access arranged to Turnberry spa resort

✈ Glasgow Prestwick 30 mins, Glasgow International 45 mins, Edinburgh International 1.5 hrs
 ✈ helipad



Tel: +44 (0)1386 897850
 info@ruralretreats.co.uk
 blaneFieldhouse.com

THE LIMING, BEQUIA

BEQUIA, ST VINCENT AND THE GRENADINES

PART OF THE LIMING & ICMI COLLECTION





THE LIMING, BEQUIA

THE ART OF DOING NOTHING

Opened in November 2018, The Liming is the Caribbean's newest luxury resort, designed to help you discover a new concept of relaxation on the Island in the Clouds, Bequia (Bek-way). Channel pure escapism in our range of meticulously designed one, two, three, four and five-bedroom villas, with each space gifting exquisite vistas while retaining the privacy afforded by an exclusive Caribbean island. Pour over the sweeping views of the ocean from your private infinity pool, immersing yourself among the colours of the Caribbean by day. When the sun goes down, eat and drink above the Caribbean Sea on our unique sea-top terrace restaurant and tantalise your taste buds with a choice of locally sourced ingredients.

Doing nothing is an art form in Bequia, and it's our philosophy at The Liming. Each decision we have taken has been carefully considered to heighten your state of relaxation, optimising your time with us and leaving you free to indulge in a little nothing.

Whether you're looking for the ultimate romantic honeymoon, taking the family to the newest Caribbean destination, or looking to explore nature with a group of friends, The Liming has accommodation to suit:

- 5 Two Bedroom Villas
- 4 One Bedroom Villas
- 1 Junior Suite
- 1 Three Bedroom Villa
- 1 Four Bedroom Villa
- 1 Five Bedroom Mansion House

- Ocean Restaurant
- Manicured Gardens
- Individual Private Infinity Pools
- Docking Pier

Located in Bequia, St. Vincent & The Grenadines

- ✈ International Airport – St Lucia Hewanorra International Airport
- Barbados Grantley Adams International Airport
- Domestic Airport – Bequia J. F. Mitchell Airport

Tel: +44 (0)131 297 0289
reservations@thelimingbequia.com
thelimingbequia.com



BEQUIA PLANTATION HOTEL

BEQUIA, ST VINCENT AND THE GRENADINES

PART OF THE LIMING & ICMi COLLECTION





BEQUIA PLANTATION HOTEL

PURE CARIBBEAN LUXURY

With its prime beach front location, secluded at the southern end of Admiralty Bay, Bequia Plantation Hotel commands one of the most breathtaking views on the island. Looking out across the sparkling blue waters of the shimmering Caribbean Sea, a golden sun tosses her rays into the evening sky. The atmosphere is filled with the scent of blooming flowers and coconut trees nestled amidst acres of mature land. Within these grounds are beautiful Caribbean villas, some with self-contained facilities equipped with the highest quality of amenities.

5 Main House Bedrooms
 2 Orchard Suites
 3 Beach Suites
 4 One Bedroom Beach Front Villas
 8 Two Bedroom Villas
 Beach Front Restaurant
 Extensive Lush Gardens
 Unmotorized Watersports on Site
 Fresh-Water Pool

Located in Bequia, St. Vincent & The Grenadines

✈ International Airport – St Lucia Hewanorra International Airport
 Barbados Grantley Adams International Airport
 Domestic Airport – Bequia J. F. Mitchell Airport

Tel: +44 (0)131 297 0288
info@bequiaplantationhotel.com
bequiaplantationhotel.com

